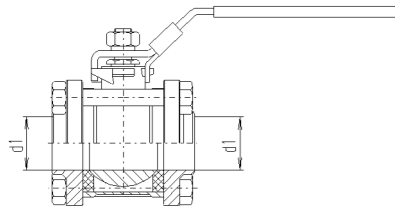


Kugelhahn 3tlg SS PN 64

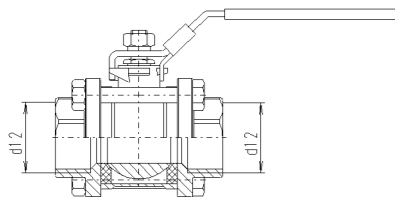
ballvalve 3 piece full bore PN 64 welding ends



DN	d1	Gewicht [kg]
1/4"	11,6	0,350
3/8"	11,6	0,430
1/2"	14,3	0,520
3/4"	20	0,720
1"	25	1,020
1 1/4"	32	1,720
1 1/2"	38	2,420
2"	50	3,600
2 1/2"	65	7,520
3"	80	10,800
4"	100	21,200

Kugelhahn 3tlg R-Gewinde i/i PN 64

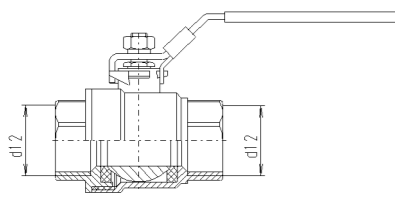
ballvalve 3 piece full bore PN 64 BSP



DN	d12	Gewicht [kg]
1/4"	R 1/4"	0,350
3/8"	R 3/8"	0,430
1/2"	R 1/2"	0,560
3/4"	R 3/4"	0,750
1"	R 1"	1,100
1 1/4"	R 1 1/4"	1,740
1 1/2"	R 1 1/2"	2,410
2"	R 2"	3,660
2 1/2"	R 2 1/2"	7,100
3"	R 3"	10,500
4"	R 4"	21,200

Kugelhahn 2tlg R-Gewinde i/i PN 64

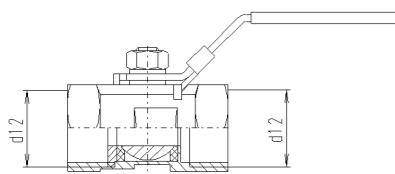
ballvalve 2 piece full bore PN 64 BSP



DN	d12	Gewicht [kg]
1/4"	R 1/4"	0,150
3/8"	R 3/8"	0,170
1/2"	R 1/2"	0,250
3/4"	R 3/4"	0,410
1"	R 1"	0,600
1 1/4"	R 1 1/4"	1,020
1 1/2"	R 1 1/2"	1,400
2"	R 2"	2,500
2 1/2"	R 2 1/2"	4,820
3"	R 3"	7,600

Kugelhahn 1tlg R-Gewinde i/i PN 64

ballvalve 1 piece full bore PN 64 BSP



DN	d12	Gewicht [kg]
1/4"	R 1/4"	0,070
3/8"	R 3/8"	0,100
1/2"	R 1/2"	0,160
3/4"	R 3/4"	0,250
1"	R 1"	0,430
1 1/4"	R 1 1/4"	0,700
1 1/2"	R 1 1/2"	0,830
2"	R 2"	1,500

Kugelhahn 3tlg SS PN 64

I.4408		
DN	Artikelnummer	Preis €
1/4"	○ 895.03.620.0051	27,97
3/8"	● 895.04.620.0051	31,08
1/2"	● 895.06.620.0051	37,17
3/4"	● 895.07.620.0051	42,01
1"	● 895.08.620.0051	56,55
1 1/4"	● 895.09.620.0051	91,83
1 1/2"	● 895.10.620.0051	112,34
2"	● 895.11.620.0051	156,34
2 1/2"	● 895.12.620.0051	365,30
3"	○ 895.13.620.0051	459,15
4"	○ 895.15.620.0051	1.190,00

Kugelhahn 3tlg R-Gewinde i/i PN 64

I.4408		
DN	Artikelnummer	Preis €
1/4"	○ 895.03.620.0050	27,97
3/8"	○ 895.04.620.0050	31,08
1/2"	● 895.06.620.0050	37,17
3/4"	● 895.07.620.0050	42,01
1"	● 895.08.620.0050	56,55
1 1/4"	○ 895.09.620.0050	91,83
1 1/2"	○ 895.10.620.0050	112,34
2"	○ 895.11.620.0050	156,34
2 1/2"	○ 895.12.620.0050	365,30
3"	○ 895.13.620.0050	459,15
4"	○ 895.15.620.0050	1.190,00

Kugelhahn 2tlg R-Gewinde i/i PN 64

I.4408		
DN	Artikelnummer	Preis €
1/4"	● 895.03.620.0073	24,70
3/8"	○ 895.04.620.0073	25,80
1/2"	● 895.06.620.0073	28,02
3/4"	● 895.07.620.0073	34,64
1"	○ 895.08.620.0073	42,98
1 1/4"	● 895.09.620.0073	66,10
1 1/2"	○ 895.10.620.0073	88,66
2"	○ 895.11.620.0073	133,94
2 1/2"	○ 895.12.620.0073	Anfrage
3"	○ 895.13.620.0073	Anfrage

Kugelhahn 1tlg R-Gewinde i/i PN 64

I.4408		
DN	Artikelnummer	Preis €
1/4"	○ 895.03.620.0057	15,72
3/8"	○ 895.04.620.0057	17,71
1/2"	● 895.06.620.0057	20,98
3/4"	● 895.07.620.0057	26,07
1"	● 895.08.620.0057	33,03
1 1/4"	● 895.09.620.0057	47,02
1 1/2"	○ 895.10.620.0057	57,05
2"	● 895.11.620.0057	67,68